

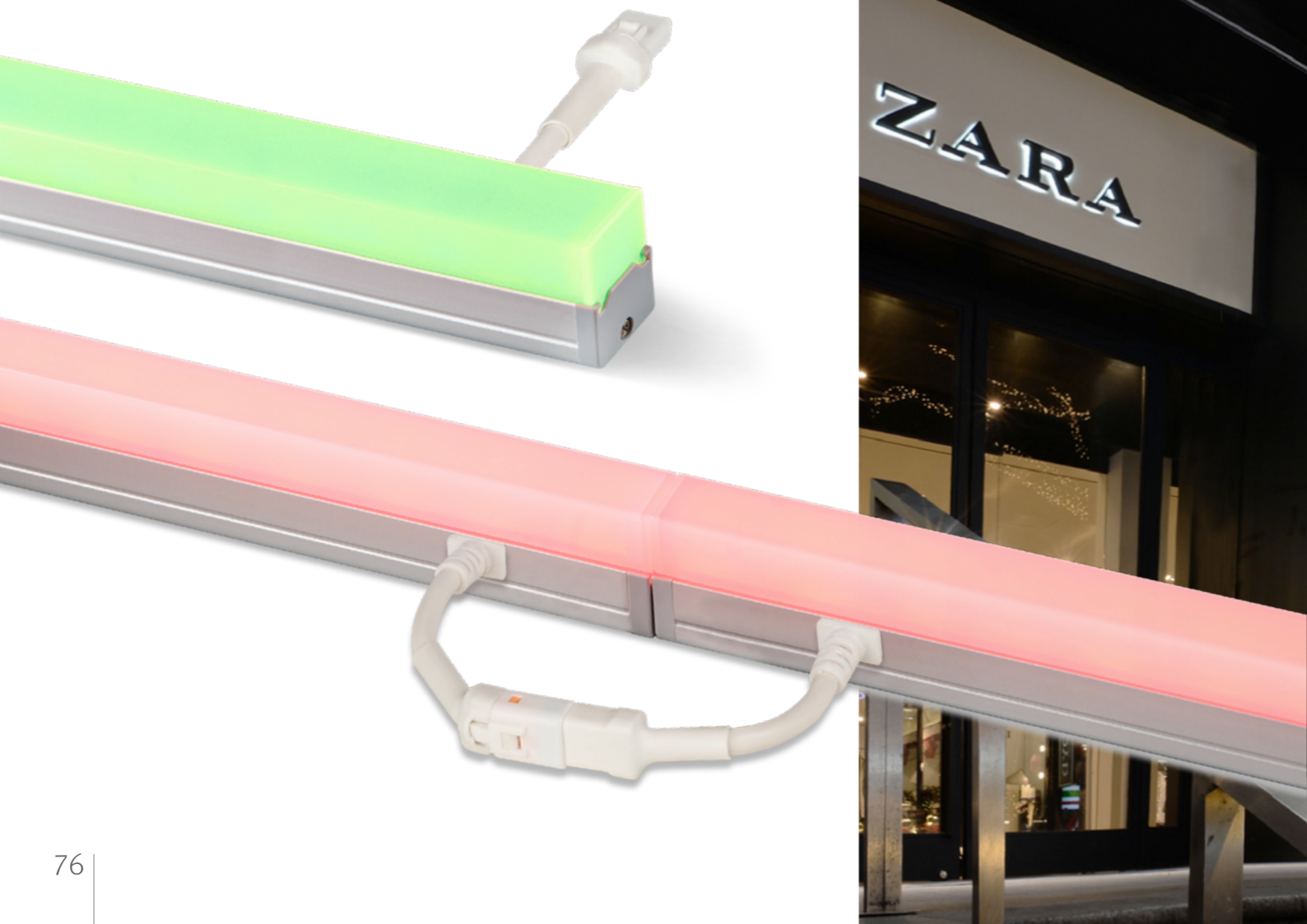
# FLX Stix ODV

LED for Outdoor installation

Light Creatures in the Night



- Slim linear LED with color changing output and a dimmable system
- Various length available
- To be used with constant voltage DC 24 driver



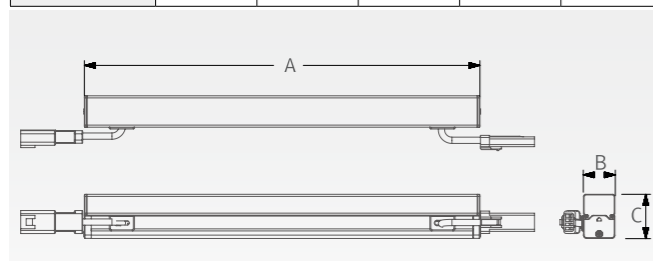


### Specification

Model Name	Power Input	Lamp Power	Available Color	Operating Temperature	IP
ODV3 40K-24V	DC 24V	3 W	2,700K / 3,000K / 4,000K	0 ~ 45°C	IP66
ODV6 40K-24V	DC 24V	6 W	2,700K / 3,000K / 4,000K	0 ~ 45°C	IP66
ODV12 40K-24V	DC 24V	12 W	2,700K / 3,000K / 4,000K	0 ~ 45°C	IP66
ODV18 40K-24V	DC 24V	18 W	2,700K / 3,000K / 4,000K	0 ~ 45°C	IP66
ODV4 RGB-24V	DC 24V	4 W	R · G · B	0 ~ 45°C	IP66
ODV6 RGB-24V	DC 24V	6 W	R · G · B	0 ~ 45°C	IP66
ODV12 RGB-24V	DC 24V	12 W	R · G · B	0 ~ 45°C	IP66
ODV18 RGB-24V	DC 24V	18 W	R · G · B	0 ~ 45°C	IP66

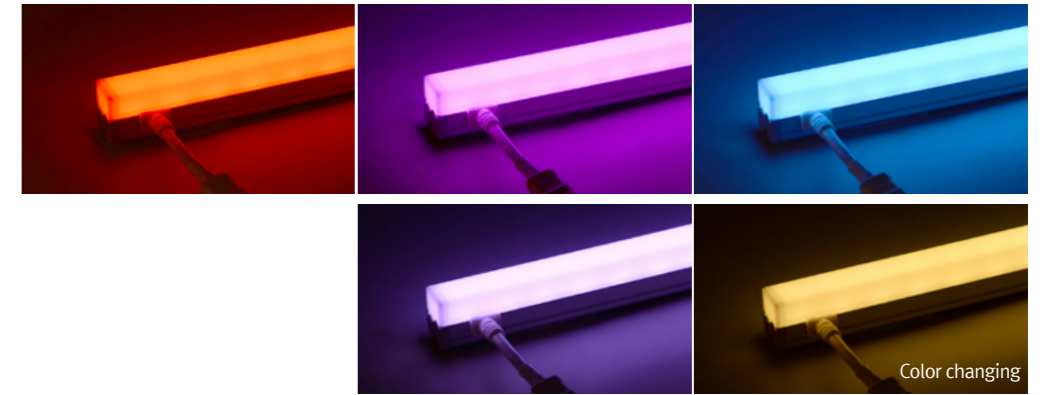
### Dimension

Model Name	Power Input (V)	Lamp Power (W)	A (mm)	B (mm)	C (mm)
ODV3 40K-24V	DC 24	3	142.4	15	22.1
ODV6 40K-24V	DC 24	6	282.5	15	22.1
ODV12 40K-24V	DC 24	12	562	15	22.1
ODV18 40K-24V	DC 24	18	841	15	22.1
ODV4 RGB-24V	DC 24	4	190.5	15	22.1
ODV6 RGB-24V	DC 24	6	282.5	15	22.1
ODV12 RGB-24V	DC 24	12	562	15	22.1
ODV18 RGB-24V	DC 24	18	841	15	22.1



Model Name	A (mm)	B (mm)	C (mm)
FLC200-24V/T	228	68	39

### Various options



### Accessories

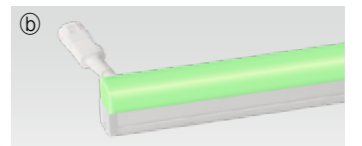
#### Ⓐ Fixture : FLX Stix ODV (Single kelvin)

- ODV3 40K-24V (3W)
- ODV6 40K-24V (6W)
- ODV12 40K-24V (12W)
- ODV18 40K-24V (18W)



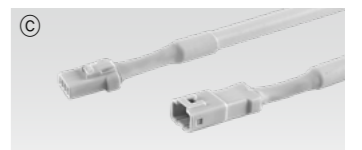
#### Ⓑ Fixture : FLX Stix ODV (RGB Color changing)

- ODV4 RGB-24V (4W)
- ODV6 RGB-24V (6W)
- ODV12 RGB-24V (12W)
- ODV18 RGB-24V (18W)



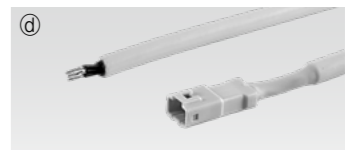
#### Ⓒ Connecting cable (Between FLX Stix ODV & FLX Stix ODV)

ODVPTC	ODVPTC1	ODVPTC2	ODVPTC4	ODVPTC6
150mm(6inch)	300mm(1feet)	600mm(2feet)	1,200mm(4feet)	1,800mm(6feet)



#### Ⓓ Power cable (Open power cable for FLX Stix ODV) : ODVPC

- ODVPC(Non dimming) 2,500mm/4,000mm/6,000mm
- ODVOPC(Dimming) 2,500mm/4,000mm/6,000mm



#### Ⓔ Mounting bracket : ODV-BRACKET

- Included in fixture
- ODV-BRACKET(A) : 1set = 2pcs
- ODV-BRACKET(B) : 1set = 3pcs



#### Ⓕ LED Driver with 12way distributor, with power cord (1,800mm)

Part No	FLC30-24V/T	FLC75-24V-P/T
Capacity	30W 24V	75W 24V



#### Ⓖ LED Driver : FLC200-24V/T (200W, DC24V)

- IP66



#### Ⓗ Dimming Interface (0-10/1-10, DMX512)

- FDA-L2M0 : Max. 200W (100W/CH, 2CH)
- FDA-L5M : Max. 200W (50W/CH, 5CH)



#### Ⓙ End cap : ODV-CAP

- Included in fixture

