

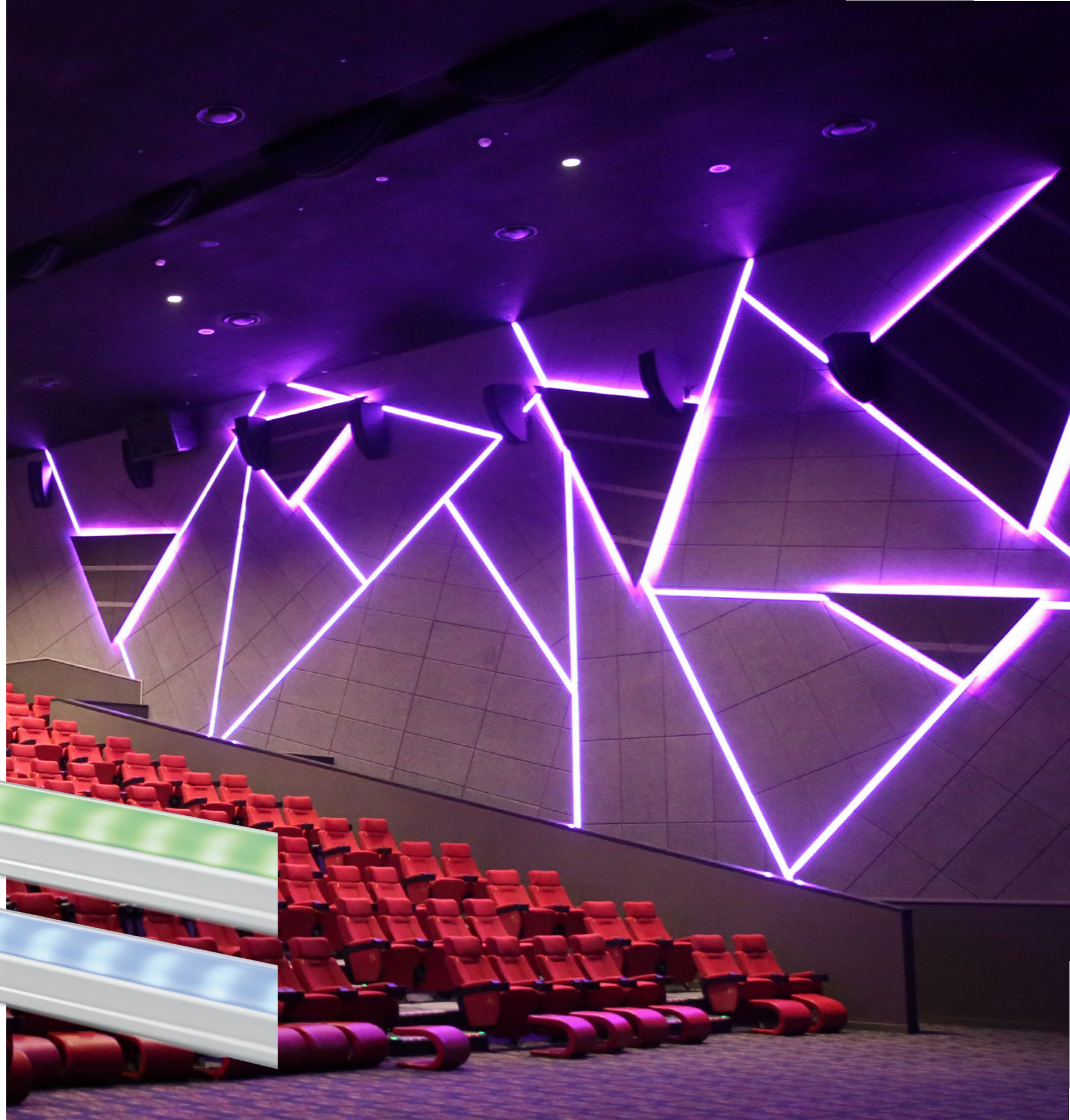
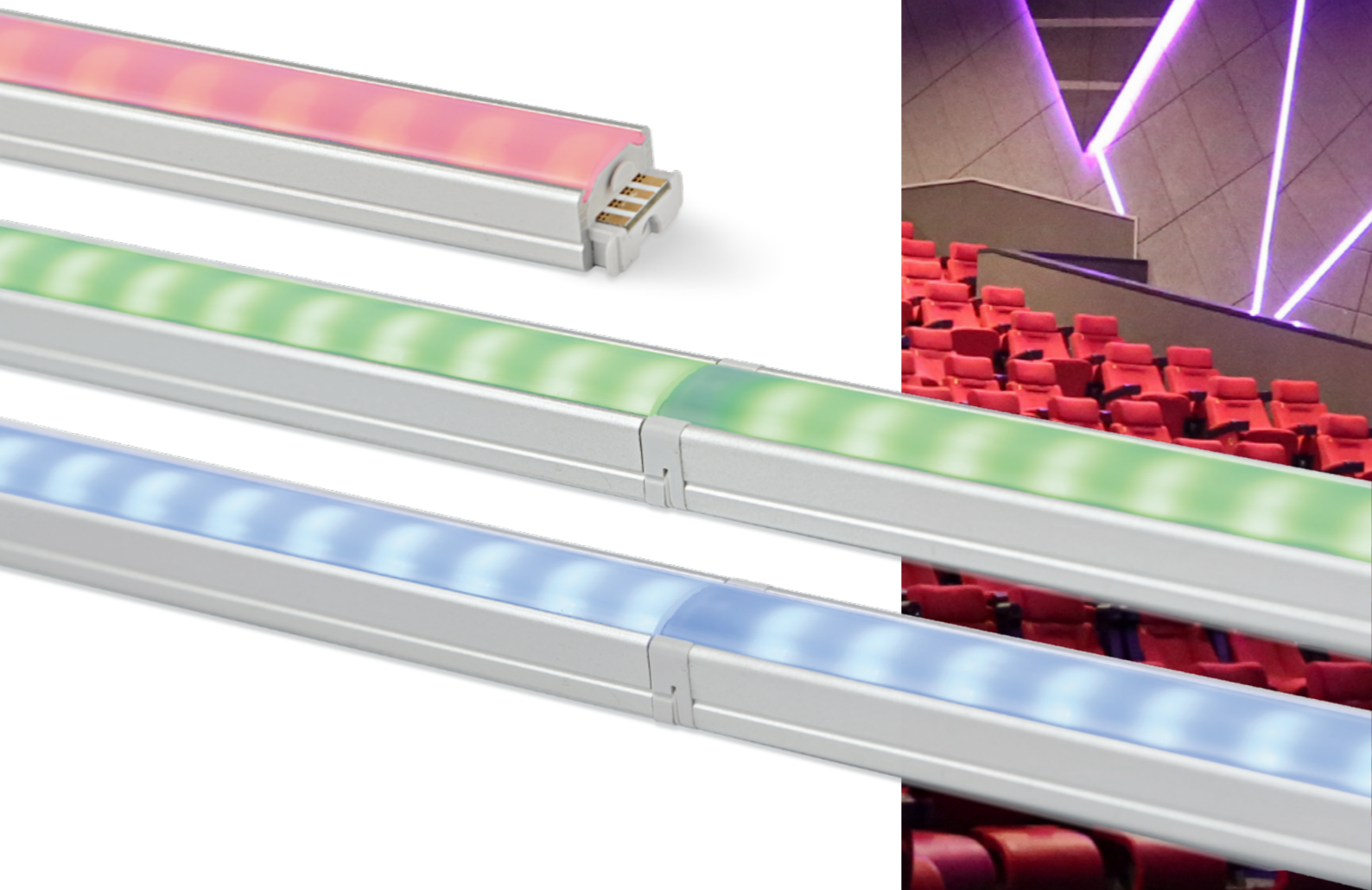
FLX Stix RDV

LED for Display, Cabinet, Furniture & Cove

Color Changing LED!



- Super slim linear LED with RGB color changing output
- Quick connection system between fixtures
- Many lengths available
- Various mounting methods including magnetic
- To be used with constant voltage DC 24V driver
- Dimmable with available accessories

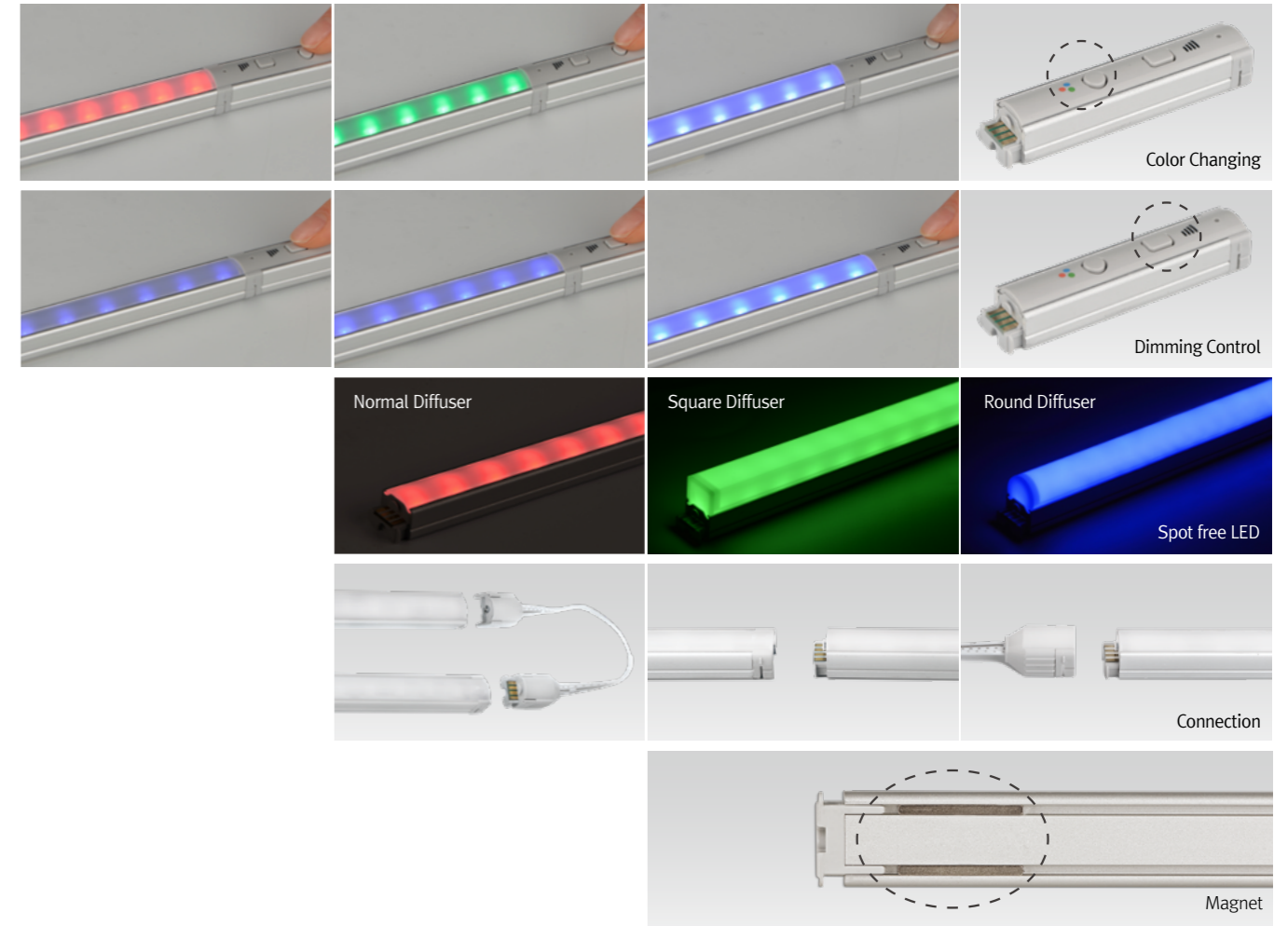




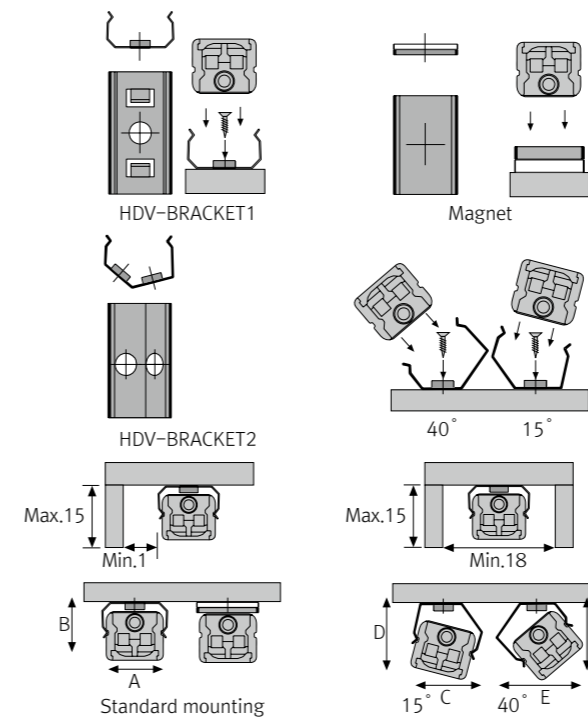
FLX Stix RDV
RGB Color changing



Various options



Installation



Max. connection

- FLX Stix DDV : 75W in one row (single power feed)
- LED Driver

LED Driver Model Name	Max. units for LED Driver		
	24V/30W	24V/75W	24V/200W
RDV6 RGB-24V	5	12	27
RDV12 RGB-24V	2	6	14
RDV18 RGB-24V	1	4	9

- W/ Bracket

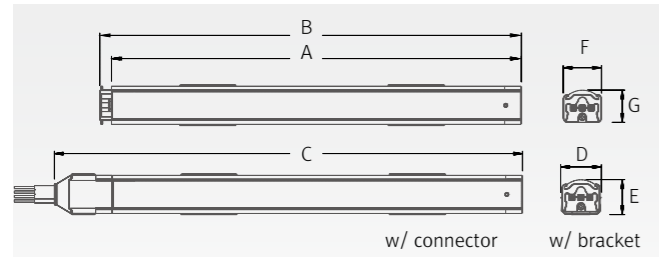
	A(mm)	B(mm)	C(mm)	D(mm)	E(mm)	F(mm)
Standard	16.8	14.2	17.5	16.5	19.1	17.5
Round type	16.8	22.1	18.8	24.4	23.4	22.9
Square type	16.8	22.6	21.3	26.2	25.7	25.7

Specification

Model Name	Power Input	Lamp Power	Color Temperature	Operating Temperature	IP
RDV6 RGB-24V	DC 24V	6 W	R · G · B	0 ~ 45°C	IP20
RDV12 RGB-24V	DC 24V	12 W	R · G · B	0 ~ 45°C	IP20
RDV18 RGB-24V	DC 24V	18 W	R · G · B	0 ~ 45°C	IP20

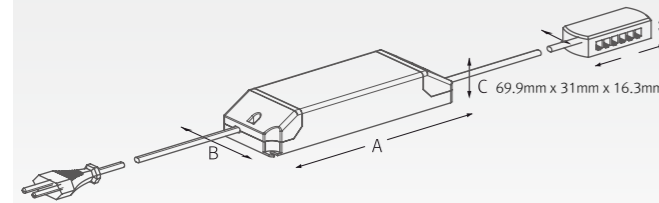
Dimension

Model Name	Power Input (V)	Lamp Power (W)	A (mm)	B (mm)	C (mm)	D (mm)	E (mm)	F (mm)	G (mm)
RDV6 RGB-24V	DC 24	6	280	285	302	16	14	15	12.5
RDV12 RGB-24V	DC 24	12	560	565	582	16	14	15	12.5
RDV18 RGB-24V	DC 24	18	840	845	862	16	14	15	12.5

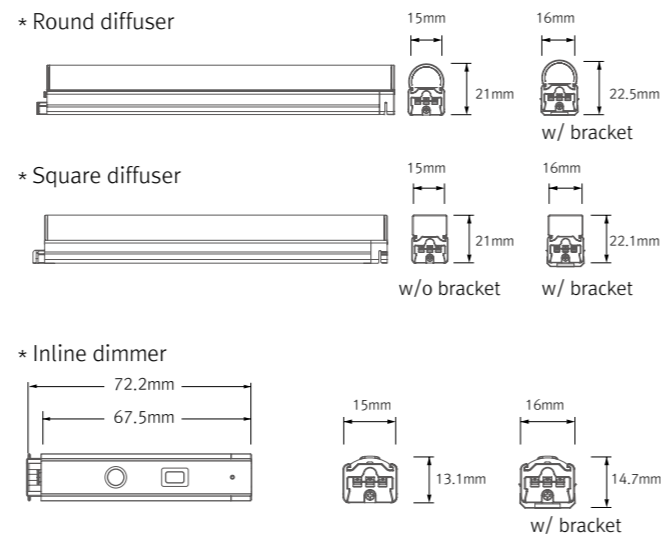
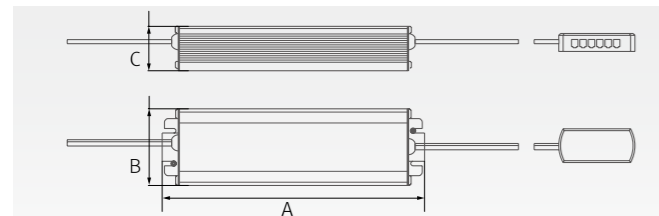


Model Name	A (mm)	B (mm)	C (mm)
FLC30-24V/T	150	41	31
FLC75-24V-P/T	180	60	32

*** LED Driver**



Model Name	A (mm)	B (mm)	C (mm)
FLC200-24V/T	228	68	39



Accessories

Ⓐ Connecting cables (Between FLX Stix RDV & FLX Stix RDV)

RDVPTC	RDVPTC1	RDVPTC2	RDVPTC4	RDVPTC6
150mm(6inch)	300mm(1feet)	600mm(2feet)	1,200mm(4feet)	1,800mm(6feet)



Ⓑ Power cable : RDVPC (2,500mm)

Power cable (Between FLX Stix RDV & 12-way distributor)



Ⓒ Mounting bracket : HDV-BRACKET1

HDV-BRACKET1(A) : 1set = 2pcs
HDV-BRACKET1(B) : 1set = 3pcs



Ⓓ Angle bracket (15° & 40°) : HDV-BRACKET2

HDV-BRACKET2(A) : 1set = 2pcs
HDV-BRACKET2(B) : 1set = 3pcs



Ⓔ Sidefeed for seamless extension (6W) : RDV6 RGB-24V-S

The dimension is the same as RDV6 RGB-24V
Powered only through cable, no power supply on the input connector



Ⓛ End cap : HDV - CAP

Included in fixture



Ⓜ LED Driver with 12way distributor, with power cord (1,800mm)

Part No	FLC30-24V/T	FLC75-24V-P/T
Capacity	30W 24V	75W 24V



Ⓨ LED Driver : FLC200-24V/T (200W, DC24V)

LED Driver With 12way distributor



Ⓩ Dimming Interface (DMX512)

FDA-L5M : Max. 200W (50W/CH, 5CH)



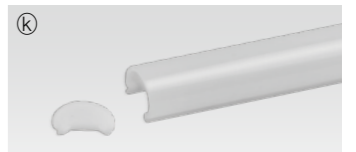
ⓐ Inline dimmer : RDVDIM

Max 75W in a row



ⓑ Round diffuser

HDV6CVRM	HDV12CVRM	HDV18CVRM
6W	12W	18W



ⓓ Square diffuser

HDV6CVSM	HDV12CVSM	HDV18CVSM
6W	12W	18W

