

TEST REPORT

1. Applicant

Client Name : FEELUX Co. Ltd.
Address : 235-48 Gwangjeok-ro Gwangjeok-myeon Yangju-si Gyeonggi-do 482-844 Korea
Date of Receipt : 190314

2. Purpose of Report :

3. Test Standard / Item : LED / 190314 DDV6 24V-C90-Cool

4. Test Period : 190314 ~ 190314

5. Test Environment

Ambient Temp. : (0 +- 3) °C
Relative Humidity : (0 +- 10) % RH

6. Test Result : Refer to the attachment

Test Item

Name of Product :

FEELUX

Model / Rating :

Model : FEELUX

Rating :

Confirmation	Test by CGR	Technical manager CGR
--------------	----------------	--------------------------

The result shown in this test report refer only to the sample(s) tested unless otherwise stated.
This report cannot be reproduced, except in full.
This report is for reference only. It cannot replace the report by standard organization(s).

TEST RESULT

Report Number	Sample Name	Sample Number	Test Standard
190314	FEELUX		LED

Test Item	Unit	Result	Memo
Beam Distribution Test	-	See attachment	
ATHD	%	0.0	
CIE 1931 Cxy		0.3327, 0.3441	
Correlated Color Temperature	K	5486	
Ra	-	92.51	
Power Factor	%	1.000	
Input Voltage	V	23.950	
Input Current	A	0.120	
Input Watt	W	2.88	
Lamp Flux	lm	224.8	
Efficient	lm/W	78.22	
Illuminance	lx	83	1 m
		21	2 m
		9	3 m

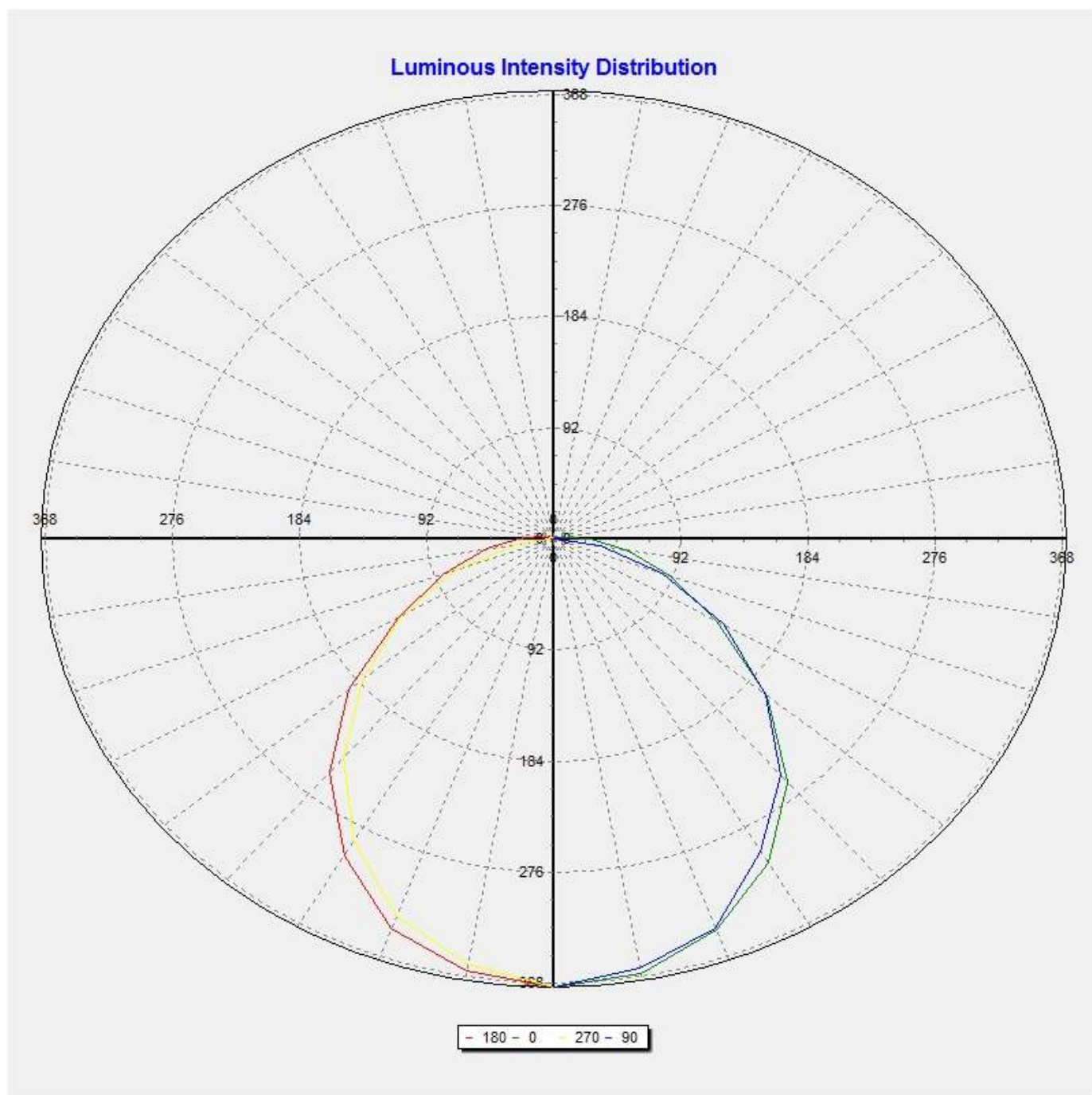
* This test result is for the sample provided by the client.

Sample photo

Click to load image

Luminaire

Lamp	Report	190314
No. of lamps	1	Filename C:\Users\WFEELUX\Desktop\완료 리포트\Data\2019\190314 DDV6 24V-C90-Cool.jdt
Lamp flux (lm)	225	Operator Current (A) 0.12 CGR
Total flux (lm)	225	Date Power Factor 1 2019-03-14 오후 5:36:45

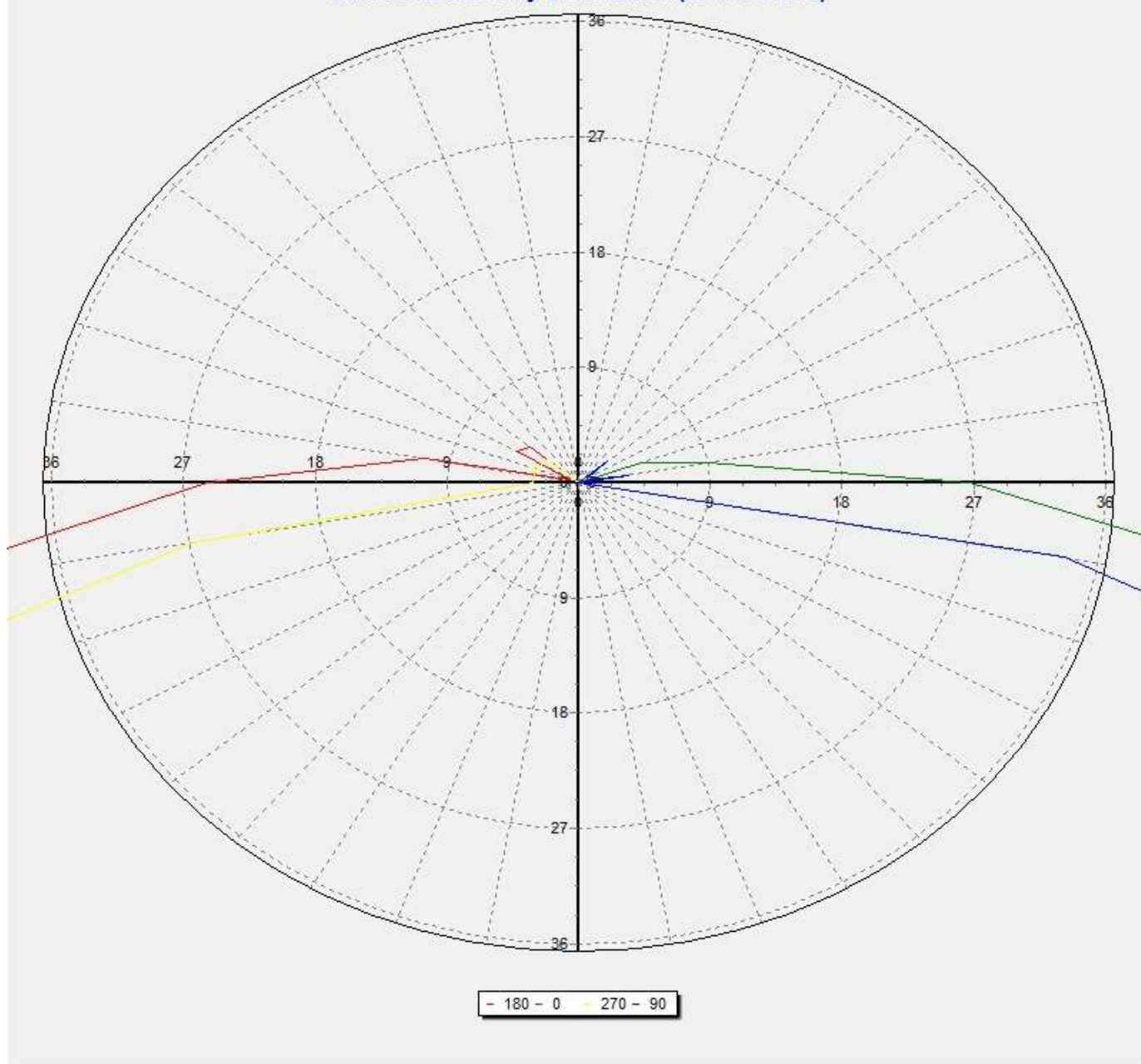


All luminous intensity values are in Cd/KLm unit.

Luminaire

Lamp	Report	190314
No. of lamps	1	Filename C:\Users\WFEELUX\Desktop\완료 리포트\Data\2019\190314 DDV6 24V-C90-Cool.jdt
Lamp flux (lm)	225	Operator Current (A) 0.12 CGR
Total flux (lm)	225	Date Power Factor 1 2019-03-14 오후 5:36:45

Luminous Intensity Distribution (Lowest 10%)



All luminous intensity values are in Cd/Klm unit.

Luminaire

Lamp	Report				190314
No. of lamps	1	Filename C:\Users\WFEELUX\Desktop\완료 리포트\Data\2019\190314 DDV6 24V-C90-Cool.jdt			
Lamp flux (lm)	225	Operator	Current (A)	0.12	CGR
Total flux (lm)	225	Date	Power Factor	1	2019-03-14 오후 5:36:45

Luminous Intensity Data

GWC	0	30	60	90	120	150	180	210	240	270	300	330	360
0	83.41	83.11	83.30	83.45	82.68	83.24	83.41	83.11	83.30	83.45	82.68	83.24	83.41
10	82.22	81.72	82.23	81.24	82.01	81.57	81.69	81.92	80.74	80.29	80.55	81.40	82.22
20	77.38	77.80	77.03	77.05	76.32	76.53	77.23	75.38	74.04	74.62	74.93	76.06	77.38
30	69.69	68.67	68.25	67.42	67.51	68.72	68.25	66.52	65.32	65.03	66.25	67.36	69.69
40	59.04	58.15	58.14	57.60	57.49	57.57	56.93	56.22	53.27	53.30	54.90	55.98	59.04
50	45.44	45.83	44.89	45.02	44.50	45.19	43.45	43.39	40.95	40.81	41.72	43.03	45.44
60	30.63	30.89	32.34	31.76	31.51	32.31	29.33	30.07	29.22	28.76	29.05	28.78	30.63
70	20.14	20.14	19.51	18.72	19.91	19.63	19.19	19.10	17.07	17.14	17.29	18.52	20.14
80	12.45	11.43	9.79	7.57	9.88	11.32	10.98	10.43	7.87	6.03	8.42	10.95	12.45
90	6.03	5.71	3.52	-0.12	3.17	5.79	5.72	4.87	2.29	0.69	2.79	5.41	6.03
100	2.00	2.04	0.47	0.78	0.19	2.13	2.42	1.69	0.12	0.69	0.81	1.51	2.00
110	1.04	0.63	0.24	0.17	0.06	0.26	0.15	-0.03	0.16	0.74	0.30	0.43	1.04
120	-0.11	0.35	0.76	0.16	0.08	0.37	1.09	0.95	1.08	0.63	0.77	0.23	-0.11
130	0.55	0.09	0.31	0.57	1.15	1.11	0.98	0.55	0.17	0.63	0.91	0.45	0.55

Luminaire

Lamp	Report	190314
No. of lamps	1	Filename C:\Users\WFEELUX\Desktop\완료 리포트\Data\2019\190314 DDV6 24V-C90-Cool.jdt
Lamp flux (lm)	225	Operator Current (A) 0.12 CGR
Total flux (lm)	225	Date Power Factor 1 2019-03-14 오후 5:36:45

Luminous Flux Table

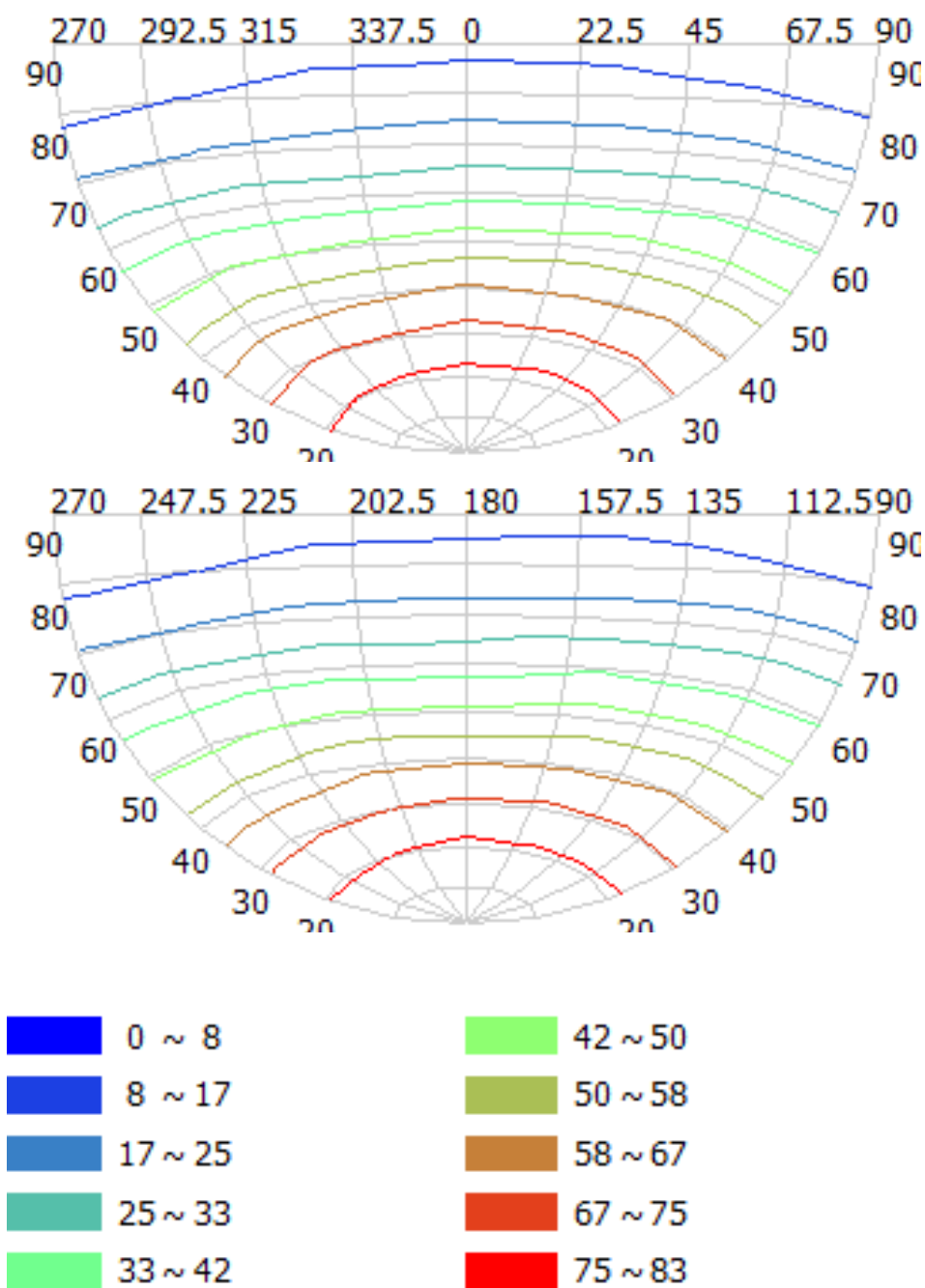
Total Lamp Lumens: 225
 Luminaire Efficiency (lm/W):224.81
 CIE Classification: Direct

Elevation	Lumens	Cumulative	Lamp %	Luminaire %
0	1.99	1.99	0.88	0.88
10	15.49	17.48	7.78	7.78
20	28.54	46.02	20.47	20.47
30	36.92	82.94	36.90	36.89
40	39.81	122.75	54.60	54.60
50	36.65	159.40	70.91	70.90
60	28.82	188.22	83.73	83.72
70	19.41	207.64	92.37	92.36
80	10.53	218.17	97.05	97.04
90	4.19	222.35	98.91	98.90
100	1.33	223.68	99.50	99.50
110	0.36	224.04	99.66	99.66
120	0.50	224.54	99.89	99.88
130	0.27	224.81	100.01	100.00

Luminaire

Lamp	Report	190314
No. of lamps	1	Filename C:\Users\WFEELUX\Desktop\완료 리포트\Data\2019\190314 DDV6 24V-C90-Cool.jdt
Lamp flux (lm)	225	Operator Current (A) 0.12 CGR
Total flux (lm)	225	Date Power Factor 1 2019-03-14 오후 5:36:45

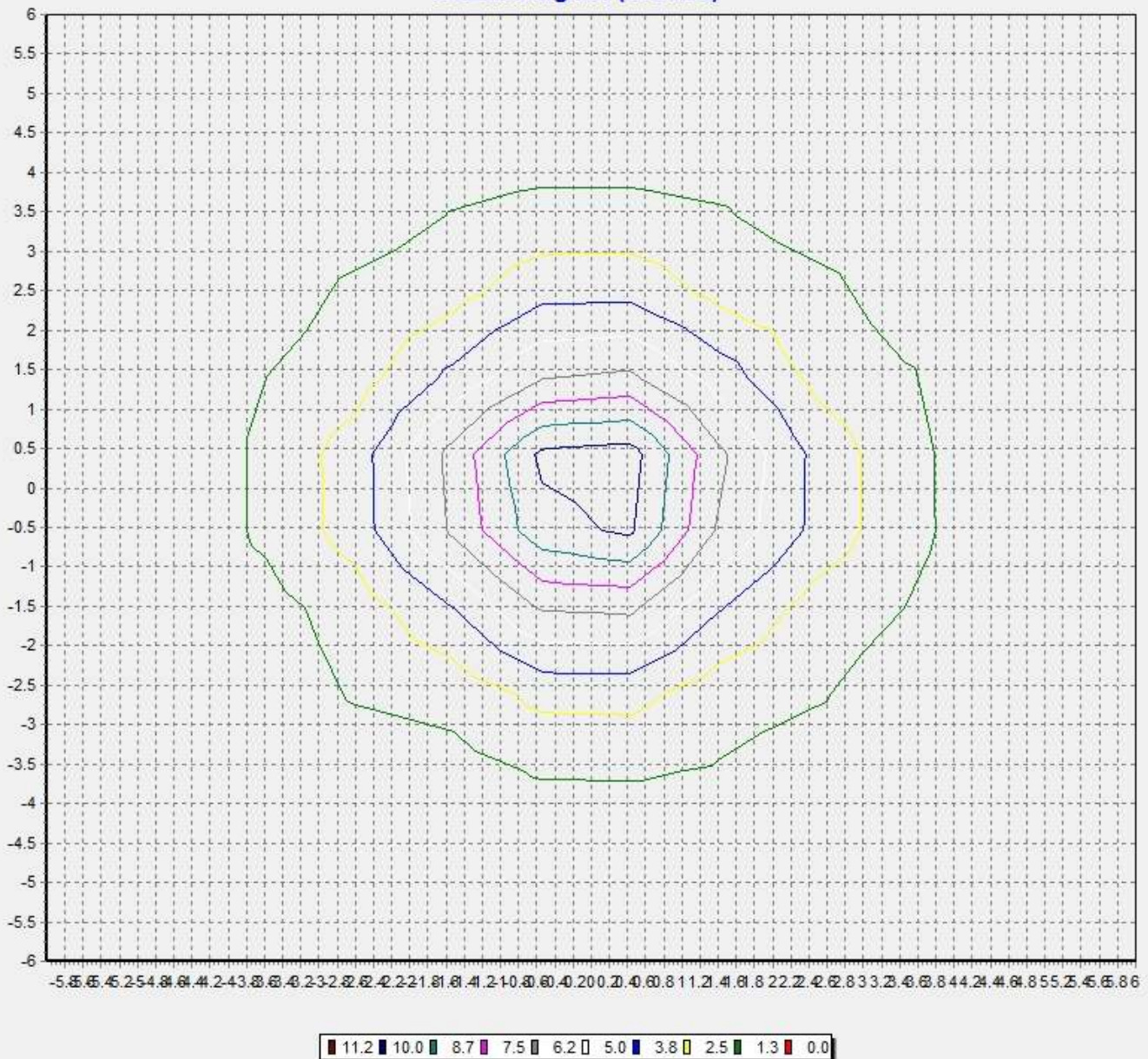
IsoCandela (Type C)



Luminaire

Lamp	Report	190314
No. of lamps	1	Filename C:\Users\WFEELUX\Desktop\완료 리포트\Data\2019\190314 DDV6 24V-C90-Cool.jdt
Lamp flux (lm)	225	Operator Current (A) 0.12 CGR
Total flux (lm)	225	Date Power Factor 1 2019-03-14 오후 5:36:45

IsoLux Diagram (Ground)



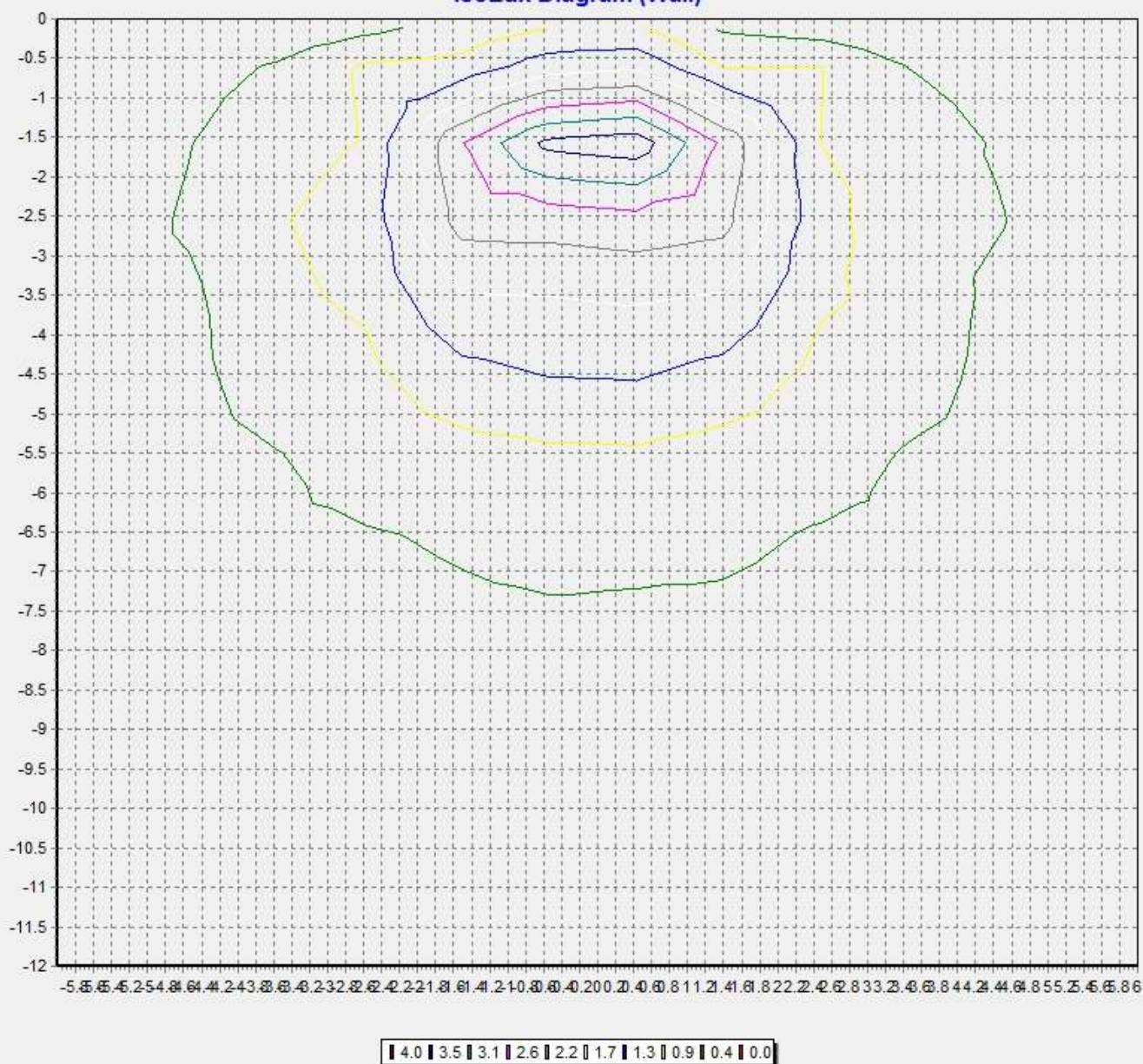
Pole Height (m): 2.7

Area Width (m): 12

Luminaire

Lamp	Report	190314
No. of lamps	1	Filename C:\Users\WFEELUX\Desktop\완료 리포트\Data\2019\190314 DDV6 24V-C90-Cool.jdt
Lamp flux (lm)	225	Operator Current (A) 0.12 CGR
Total flux (lm)	225	Date Power Factor 1 2019-03-14 오후 5:36:45

IsoLux Diagram (Wall)



Pole Height (m): 2.7 Wall Distance (m): 2.7
Aiming Plane: 0 Wall Height (m): 12

Luminaire

Lamp				Report	190314
No. of lamps	1	Voltage (V)	23.95	Filename	C:\Users\WFEELUX\Desktop\완료 리포트\Data\2019\190314 DDV6 24V-C90-Cool.jdt
Lamp flux (lm)	225	Current (A)	0.12	Operator	CGR
Total flux (lm)	225	Power Factor	1	Date	2019-03-14 오후 5:36:45

Illuminance Levels (Ground)

6.00	0.11	0.15	0.12	0.16	0.19	0.22	0.23	0.22	0.20	0.16	0.12	0.15	0.11
5.00	0.15	0.13	0.18	0.25	0.50	0.59	0.63	0.59	0.50	0.26	0.19	0.13	0.14
4.00	0.12	0.19	0.43	0.63	0.63	0.82	0.89	0.82	0.62	0.63	0.43	0.19	0.12
3.00	0.16	0.26	0.63	0.74	1.58	1.70	1.95	1.73	1.59	0.73	0.63	0.26	0.16
2.00	0.20	0.50	0.63	1.58	2.23	3.63	4.34	3.67	2.28	1.61	0.62	0.50	0.19
1.00	0.22	0.58	0.79	1.70	3.63	6.64	9.17	6.79	3.67	1.74	0.77	0.57	0.21
0.00	0.22	0.61	0.84	1.89	4.33	9.22	11.44	9.28	4.47	1.98	0.88	0.63	0.23
-1.00	0.22	0.59	0.79	1.65	3.55	6.63	9.06	6.46	3.47	1.61	0.78	0.58	0.22
-2.00	0.19	0.48	0.60	1.55	2.18	3.53	4.08	3.46	2.08	1.53	0.58	0.47	0.18
-3.00	0.15	0.25	0.61	0.70	1.47	1.62	1.78	1.58	1.46	0.68	0.60	0.24	0.14
-4.00	0.12	0.18	0.41	0.58	0.60	0.74	0.81	0.74	0.58	0.57	0.39	0.17	0.11
-5.00	0.14	0.13	0.17	0.23	0.47	0.54	0.57	0.54	0.46	0.23	0.17	0.11	0.13
-6.00	0.10	0.14	0.11	0.15	0.18	0.20	0.21	0.20	0.17	0.14	0.11	0.13	0.10
-6.00	-5.00	-4.00	-3.00	-2.00	-1.00	0.00	1.00	2.00	3.00	4.00	5.00	6.00	

Illum. (Max.): 11.4

All illuminance level values are in lux.

Illum. (Min.): 0.10

Illum. Avg.: 1.24

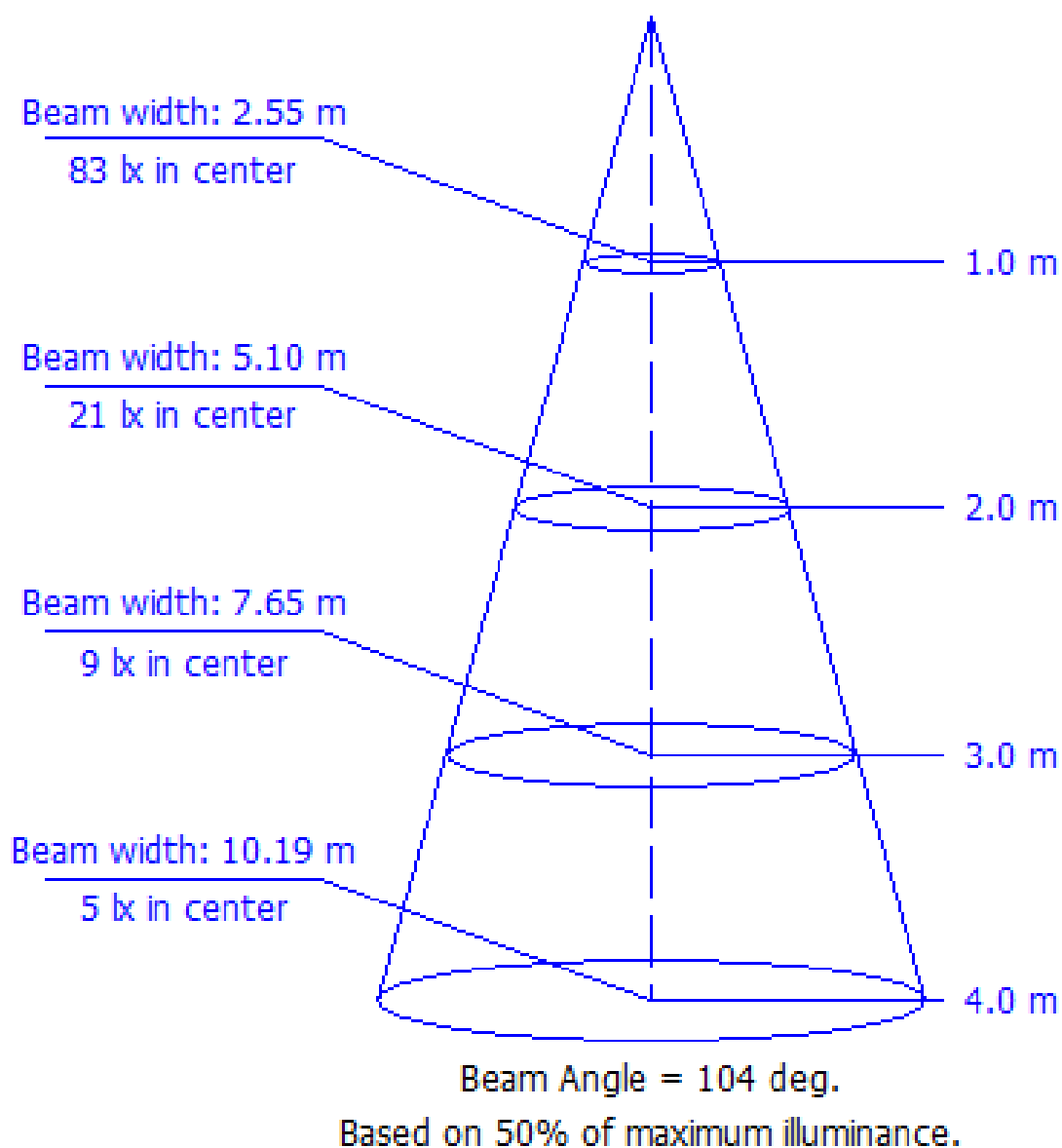
Total Optical Solution Provider


<http://www.jnctech.co.kr>
J & C Technology Co., Ltd.

Luminaire

Lamp	Report				190314
No. of lamps	1	Filename C:\Users\WFEELUX\Desktop\완료 리포트\Data\2019\190314 DDV6 24V-C90-Cool.jdt			
Lamp flux (lm)	225	Operator	Current (A)	0.12	CGR
Total flux (lm)	225	Date	Power Factor	1	2019-03-14 오후 5:36:45

Illuminance Cone Diagram



Luminaire

Lamp				Report	190314
No. of lamps	1	Voltage (V)	23.95	Filename	C:\Users\WFEELUX\Desktop\완료 리포트\Data\2019\190314 DDV6 24V-C90-Cool.jdt
Lamp flux (lm)	225	Current (A)	0.12	Operator	CGR
Total flux (lm)	225	Power Factor	1	Date	2019-03-14 오후 5:36:45

Coefficient of Utilization

Refl. Ceiling (%)	80%	80%	80%	70%	70%	70%	50%	50%	50%	30%	30%	30%	10%	10%	10%	0%
Refl. Wall (%)	50%	30%	10%	50%	30%	10%	50%	30%	10%	50%	30%	10%	50%	30%	10%	0%
Eff. Floor Cavity Refl.	20%	20%	20%	20%	20%	20%	20%	20%	20%	20%	20%	20%	20%	20%	20%	20%
Room CR 0	0.00	0.00	0.00	0.00	0.00	0.00	0.00	0.00	0.00	0.00	0.00	0.00	0.00	0.00	0.00	0.00
Room CR 1	0.00	0.00	0.00	0.00	0.00	0.00	0.00	0.00	0.00	0.00	0.00	0.00	0.00	0.00	0.00	0.00
Room CR 2	0.00	0.00	0.00	0.00	0.00	0.00	0.00	0.00	0.00	0.00	0.00	0.00	0.00	0.00	0.00	0.00
Room CR 3	0.00	0.00	0.00	0.00	0.00	0.00	0.00	0.00	0.00	0.00	0.00	0.00	0.00	0.00	0.00	0.00
Room CR 4	0.00	0.00	0.00	0.00	0.00	0.00	0.00	0.00	0.00	0.00	0.00	0.00	0.00	0.00	0.00	0.00
Room CR 5	0.00	0.00	0.00	0.00	0.00	0.00	0.00	0.00	0.00	0.00	0.00	0.00	0.00	0.00	0.00	0.00
Room CR 6	0.00	0.00	0.00	0.00	0.00	0.00	0.00	0.00	0.00	0.00	0.00	0.00	0.00	0.00	0.00	0.00
Room CR 7	0.00	0.00	0.00	0.00	0.00	0.00	0.00	0.00	0.00	0.00	0.00	0.00	0.00	0.00	0.00	0.00
Room CR 8	0.00	0.00	0.00	0.00	0.00	0.00	0.00	0.00	0.00	0.00	0.00	0.00	0.00	0.00	0.00	0.00
Room CR 9	0.00	0.00	0.00	0.00	0.00	0.00	0.00	0.00	0.00	0.00	0.00	0.00	0.00	0.00	0.00	0.00
Room CR 10	0.00	0.00	0.00	0.00	0.00	0.00	0.00	0.00	0.00	0.00	0.00	0.00	0.00	0.00	0.00	0.00