

DATE

PROJECT

TYPE



MonoRail Pro

Modular Low Voltage Rail System for Flexible Creativity



PRODUCT FEATURES

- Super-slim linear LED for power rail
- Greatly extends the length of a run with a single power point
- Fixtures snap onto power track with no breaks in light output
- To be used with constant voltage DC 24V driver
- Dimmable

PRODUCT SPECIFICATIONS

- Voltage: DC 24V
- Operating Temperature: 0-45°C
- Lamp Life: 50,000 hrs / 70%
- Available CCTs: 2700K, 3000K, 3500K, 4000K
- Color Rendering Index: CRI > 90
- Finishes: Gray, White, Black
- Dimmable

SPECIFICATION

Refer to individual luminaire IES files for performance data for other CCTs.

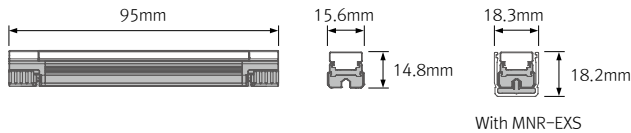
Model Name	Power Input	Lamp Power	Luminous Flux	Luminous Efficacy	Color Rendering Index	CCT	Operating Temperature
MNP1 40K-24V-C90	DC 24V	1.45 W	103.5 lm	70.7 lm/W	CRI > 90	2700K/3000K/3500K/4000K	0-45°C
MNP4 40K-24V-C90	DC 24V	4.33 W	264.6 lm	72.99 lm/W	CRI > 90	2700K/3000K/3500K/4000K	0-45°C
MNP8 40K-24V-C90	DC 24V	8.59 W	348.8 lm	70.98 lm/W	CRI > 90	2700K/3000K/3500K/4000K	0-45°C

MonoRail Pro 1W

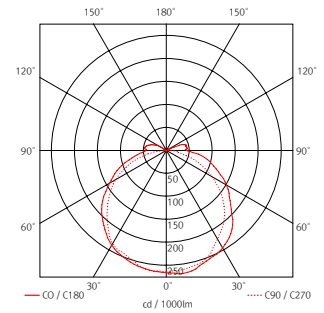


MNP 1W Length 95mm

Model Name	Power Input	Lamp Power	Luminous Flux	Luminous Efficacy	Color Rendering Index	CCT	Operating Temperature
MNP1 40K-24V-C90	DC 24V	1.45 W	103.5 lm	70.7 lm/W	CRI > 90	2700K/3000K/3500K/4000K	0-45°C



MNP1 40K-24V-C90
103.5 lm, 70.7 lm/W

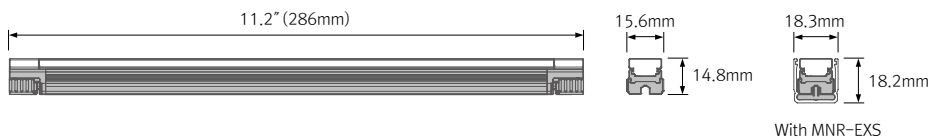


MonoRail Pro 4W

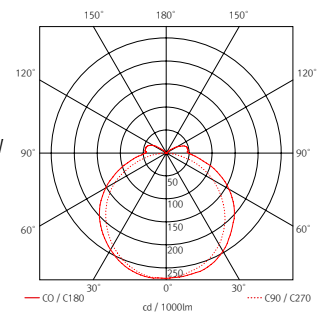


MNP 4W Length 286mm

Model Name	Power Input	Lamp Power	Luminous Flux	Luminous Efficacy	Color Rendering Index	CCT	Operating Temperature
MNP4 40K-24V-C90	DC 24V	4.33 W	315.3 lm	72.99 lm/W	CRI > 90	2700K/3000K/3500K/4000K	0-45°C



MNP4 40k-24V-C90
315.3 lm, 72.99 lm/W

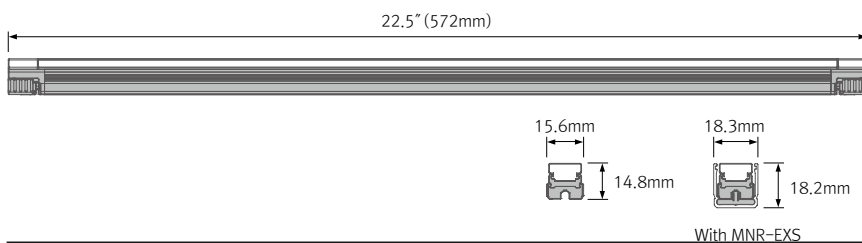


MonoRail Pro 8W

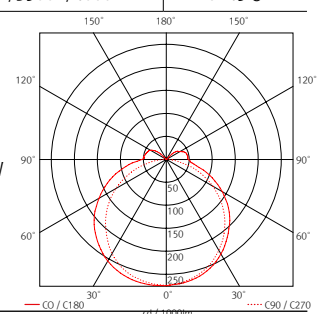


MNP 8W Length 572mm

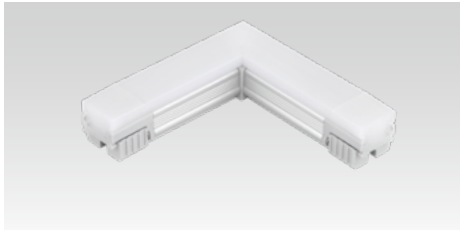
Model Name	Power Input	Lamp Power	Luminous Flux	Luminous Efficacy	Color Rendering Index	CCT	Operating Temperature
MNP8 40K-24V-C90	DC 24V	8.59 W	609.9 lm	70.98 lm/W	CRI > 90	2700K/3000K/3500K/4000K	0-45°C



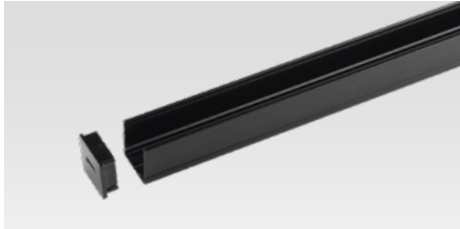
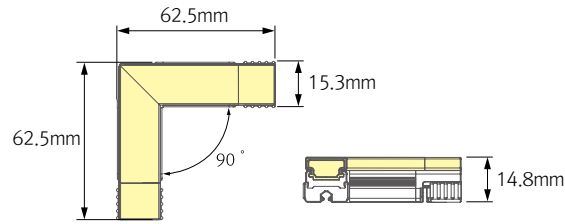
MNP8 40K-24V-C90
609.9 lm, 70.98 lm/W



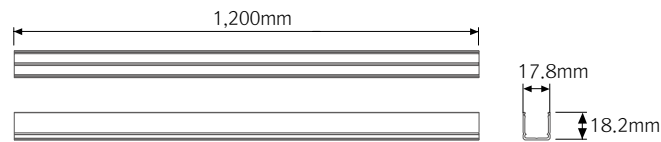
OPTIONS



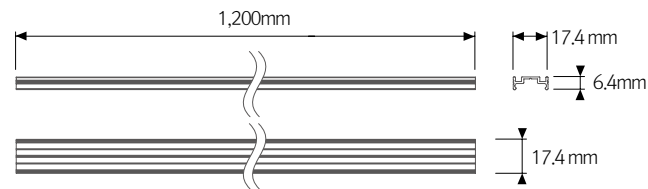
* 90° CONNECTING FIXTURE



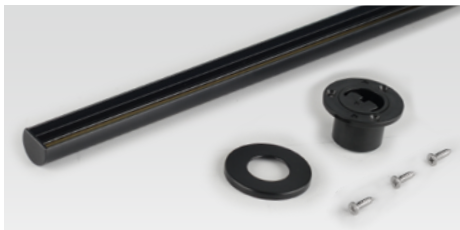
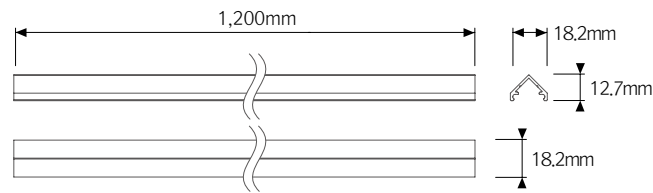
* MNR-Rail Extrusion Surface



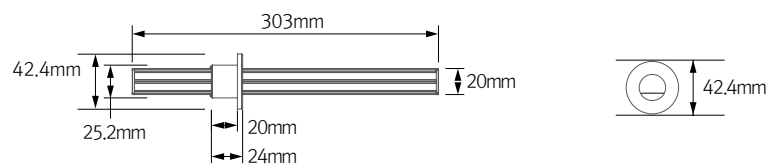
* MNP-RAIL EXTRUSION LINE



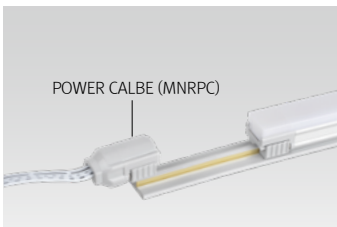
* MNP-RAIL EXTRUSION CORNER



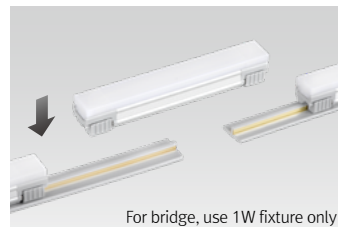
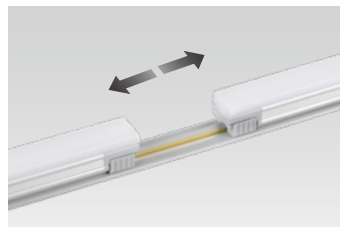
* MNP RAIL EXTRUSION POLE



EASY CONNECTION



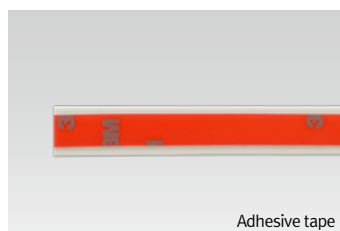
POWER CALBE (MNRPC)



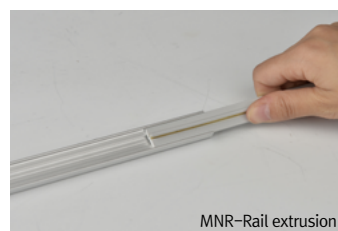
For bridge, use 1W fixture only



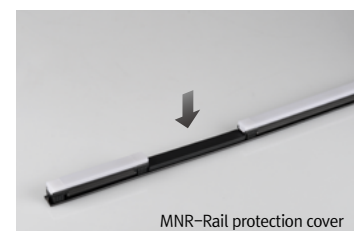
Mounting bracket



Adhesive tape



MNR-Rail extrusion



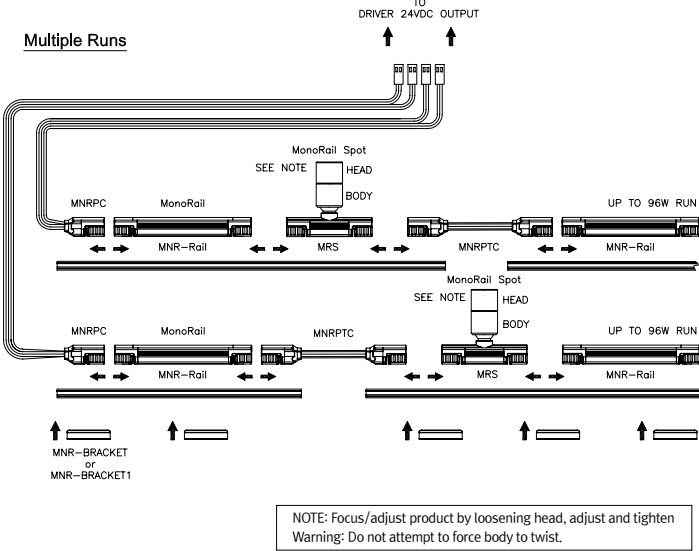
MNR-Rail protection cover

MONORAIL INSTALLATION

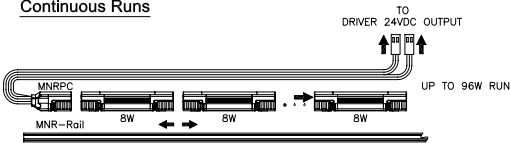
Can run up to 96W in one run

CAUTION:
TOTAL CONNECTED FIXTURES WATTAGE NOT TO EXCEED DRIVER WATTAGE

Connecting Fixtures



Continuous Runs

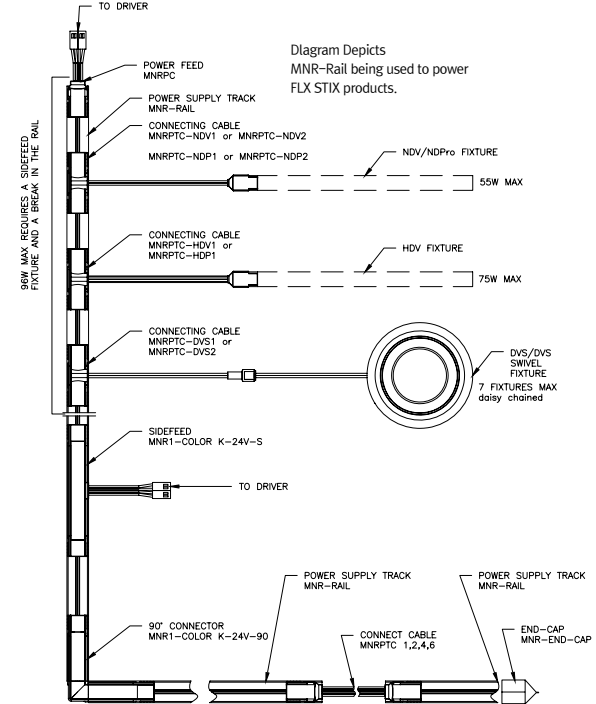


CAUTION : DO NOT EXCEED RATED WATTAGE OF PRODUCT OR DRIVER AT ANY TIME

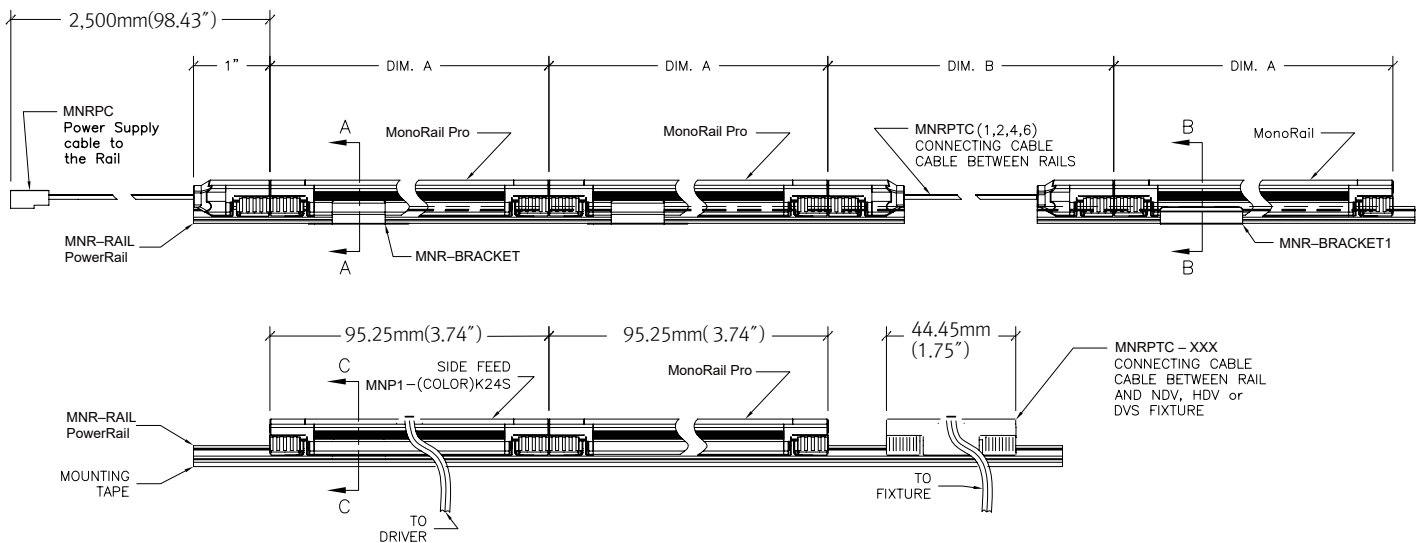
POWER RAIL INSTALLATION

CAUTION:
TOTAL CONNECTED FIXTURES WATTAGE NOT TO EXCEED DRIVER WATTAGE

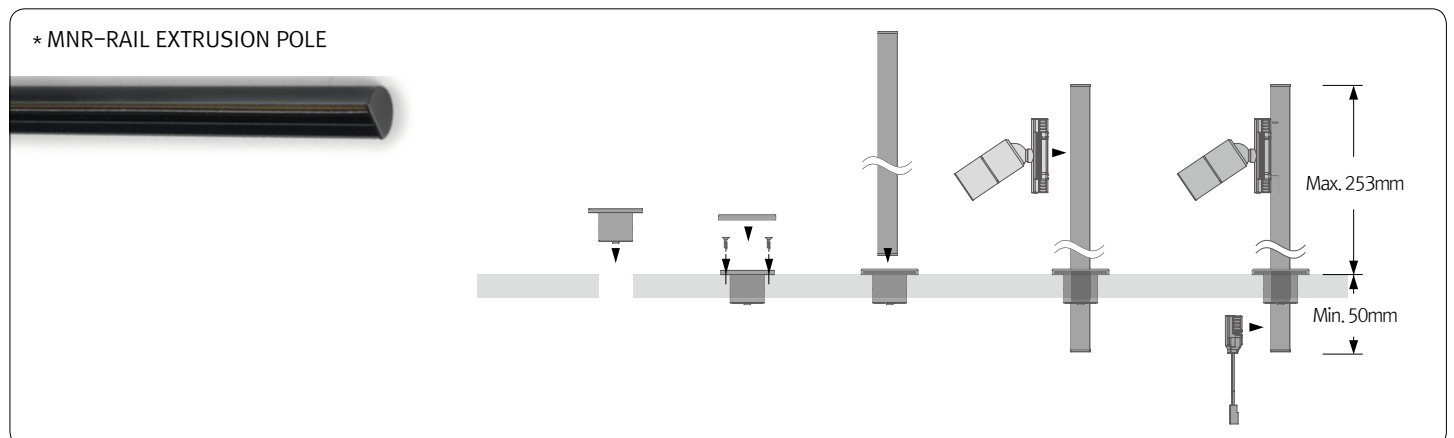
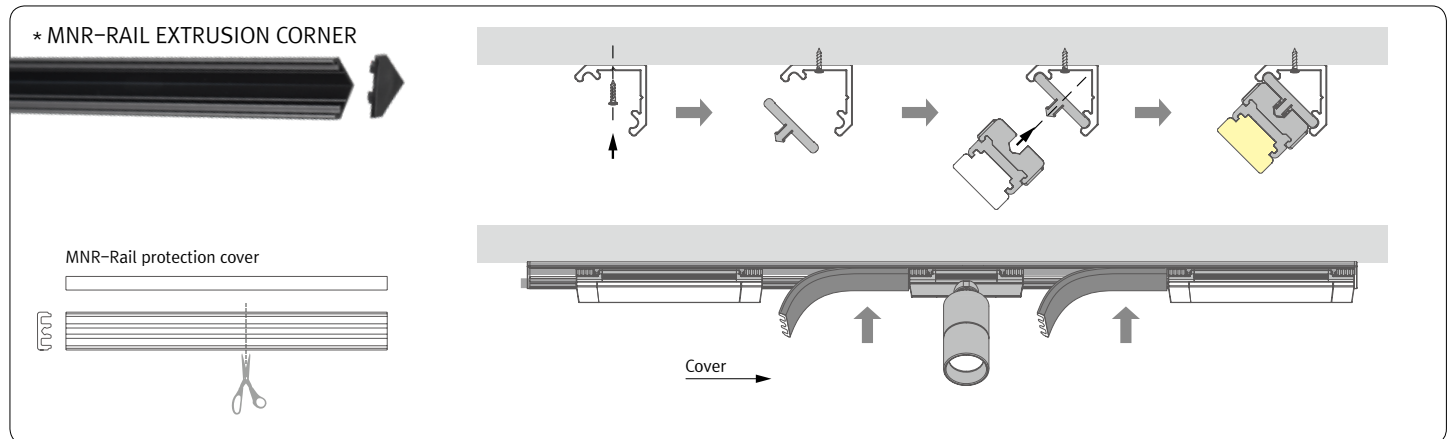
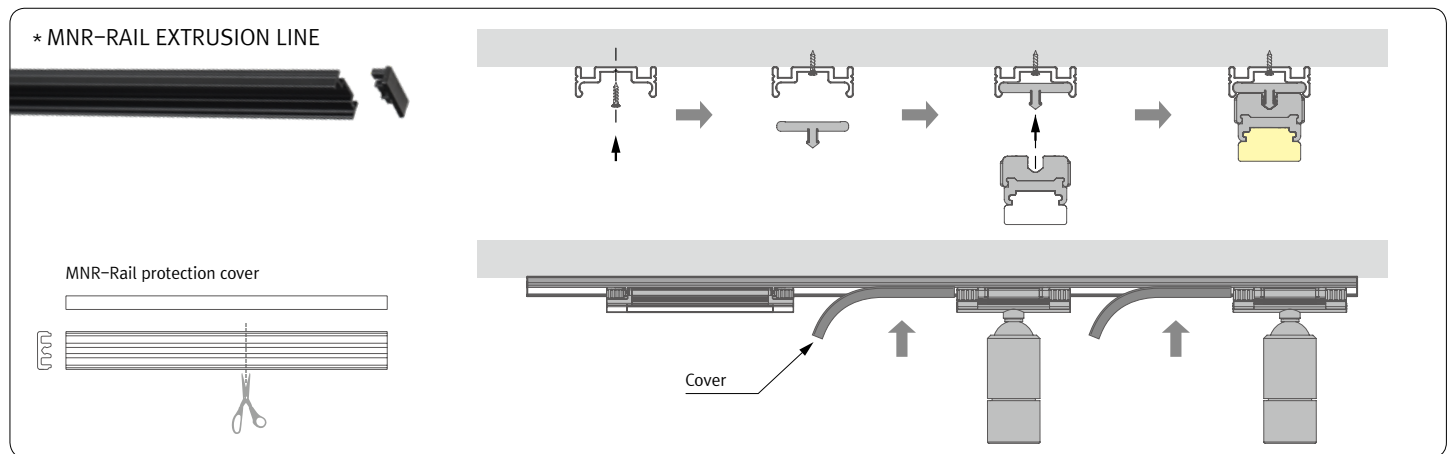
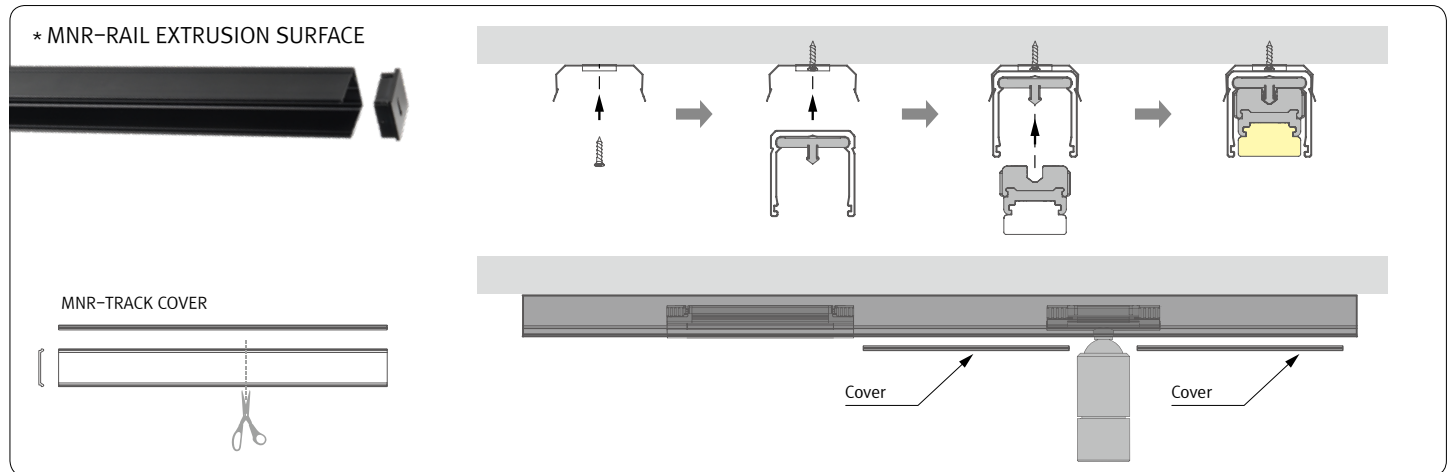
Connecting Accessories



INSTALLATION DIAGRAM



INSTALLATION



COMPONENTS



MonoRail Spot HO

- __MRS3-CCT-24V-SV-25
- __MRS3-CCT-24V-BK-25
- __MRS3-CCT-24V-WT-25
- __MRS3-CCT-24V-SV-45
- __MRS3-CCT-24V-BK-45
- __MRS3-CCT-24V-WT-45
- __MRS3-CCT-24V-SV-60
- __MRS3-CCT-24V-BK-60
- __MRS3-CCT-24V-WT-60



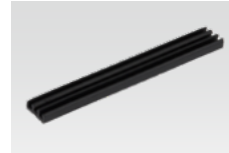
Connecting Cable

- __MNRPTC/T (150mm)
- __MNRPTC1/T (300mm)
- __MNRPTC2/T (600mm)
- __MNRPTC4/T (1,200mm)
- __MNRPTC6/T (1,800mm)
- __MNRPTC/T (150mm)-BK
- __MNRPTC1/T (300mm)-BK
- __MNRPTC2/T (600mm)-BK
- __MNRPTC4/T (1,200mm)-BK
- __MNRPTC6/T (1,800mm)-BK



MNR-Rail Extrusion Pole (300mm)

- __MNR-EXP-SV (silver)
 - __MNR-EXP-BK (black)
- With MNR-Rail Track



MNR-Rail protection cover

- __MNR-Rail cover



MonoRail Spot HO AG (Anti Glare)

- __MRS3-CCT-24V-SV-25-AG
- __MRS3-CCT-24V-BK-25-AG
- __MRS3-CCT-24V-WT-25-AG
- __MRS3-CCT-24V-SV-45-AG
- __MRS3-CCT-24V-BK-45-AG
- __MRS3-CCT-24V-WT-45-AG
- __MRS3-CCT-24V-SV-60-AG
- __MRS3-CCT-24V-BK-60-AG
- __MRS3-CCT-24V-WT-60-AG



Power Feed

- __MNRPC
- __MNRPC-BK



12 Port Hub

- __12 Way distributor
- Included with Cord and Plug drivers. Order separately for 3rd Party Drivers



Connecting Cable

- __MNRPTC-DVS1 (300mm)
- __MNRPTC-DVS2 (600mm)
- __MNRPTC-DVS1 (300mm)-BK
- __MNRPTC-DVS2 (600mm)-BK



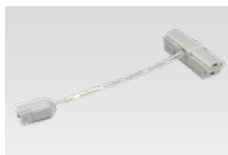
LED Drivers

- __FLC30-24V/T (30W)
 - __FLC75-24V/T (75W)
- with distributor and power cord (1,800mm)



Sidefeed

- __MNP1-CCT-24V-S



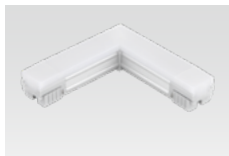
Connecting Cable

- __MNRPTC-NDV1 (300mm)
- __MNRPTC-NDV2 (600mm)
- __MNRPTC-NDV1 (300mm)-BK
- __MNRPTC-NDV2 (600mm)-BK



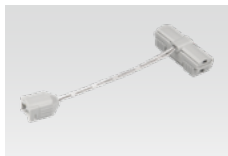
LED Driver

- __FLC200-24V/T (200W)
- with 12way distributor



90° Connector

- __MNP1-CCT-24V-90



Connecting Cable

- __MNRPTC-HDV1 (300mm)
- __MNRPTC-HDV2 (600mm)



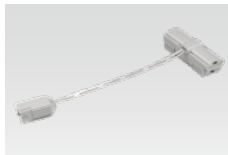
Dimming Interface (0-10V/1-10V)

- __FDC-L10 (Max. 100W)



Power Supply Track

- __MNR-RAIL-BK(20M)
- __MNR-RAIL-GY(20M)
- __MNR-RAIL-WT(20M)
- __MNR-RAIL-BK(1.2M)
- __MNR-RAIL-GY(1.2M)
- __MNR-RAIL-WT(1.2M)



Connecting Cable

- __MNRPTC-NDP1(300mm)
- __MNRPTC-NDP2(600mm)
- __MNRPTC-NDP1(300mm)-BK
- __MNRPTC-NDP2(600mm)-BK



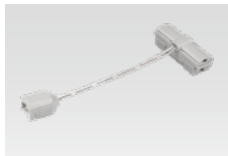
Dimming Interface

- __FDA-L2MO (0-10V/1-10V, DMX512) Max. 200W (100W/CH, 2CH)
- __FDA-L5M (DMX512) Max. 200W (50W/CH, 5CH)



End Cap

- __MNR-CAP
- Included with track



Connecting Cable

- __MNRPTC-HDP1(300mm)
- __MNRPTC-HDP2(600mm)
- __MNRPTC-HDP1(300mm)-BK
- __MNRPTC-HDP2(600mm)-BK



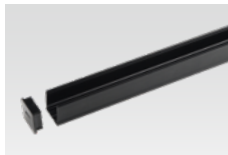
Dimming Interface (Dail)

- __FDD-L1DA Max. 200W (100W/CH, 1CH)



Mounting Brackets

- __MNR-BRACKET
- Included with track



MNR-Rail Extrusion-Surface (1,200mm)

- __MNR-EXS-SV (silver)
 - __MNR-EXS-BK (black)
- Without MNR-Rail



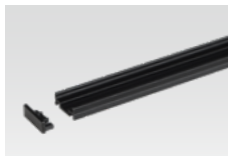
Door and motion sensor

- __FLS-M24V



Mounting Brackets - Slim Style

- __MNR-BRACKET1



MNR-Rail Extrusion-Line (1,200mm)

- __MNR-EXL-SV (silver)
 - __MNR-EXL-BK (black)
- Without MNR-Rail



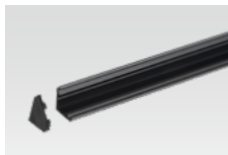
Occupancy sensor

- __FLS-P24V



Fixture Remover

- __MNP-REMOVER



MNR-Rail Extrusion Corner (1,200mm)

- __MNR-EXC-SV (silver)
 - __MNR-EXC-BK (black)
- Without MNR-Rail